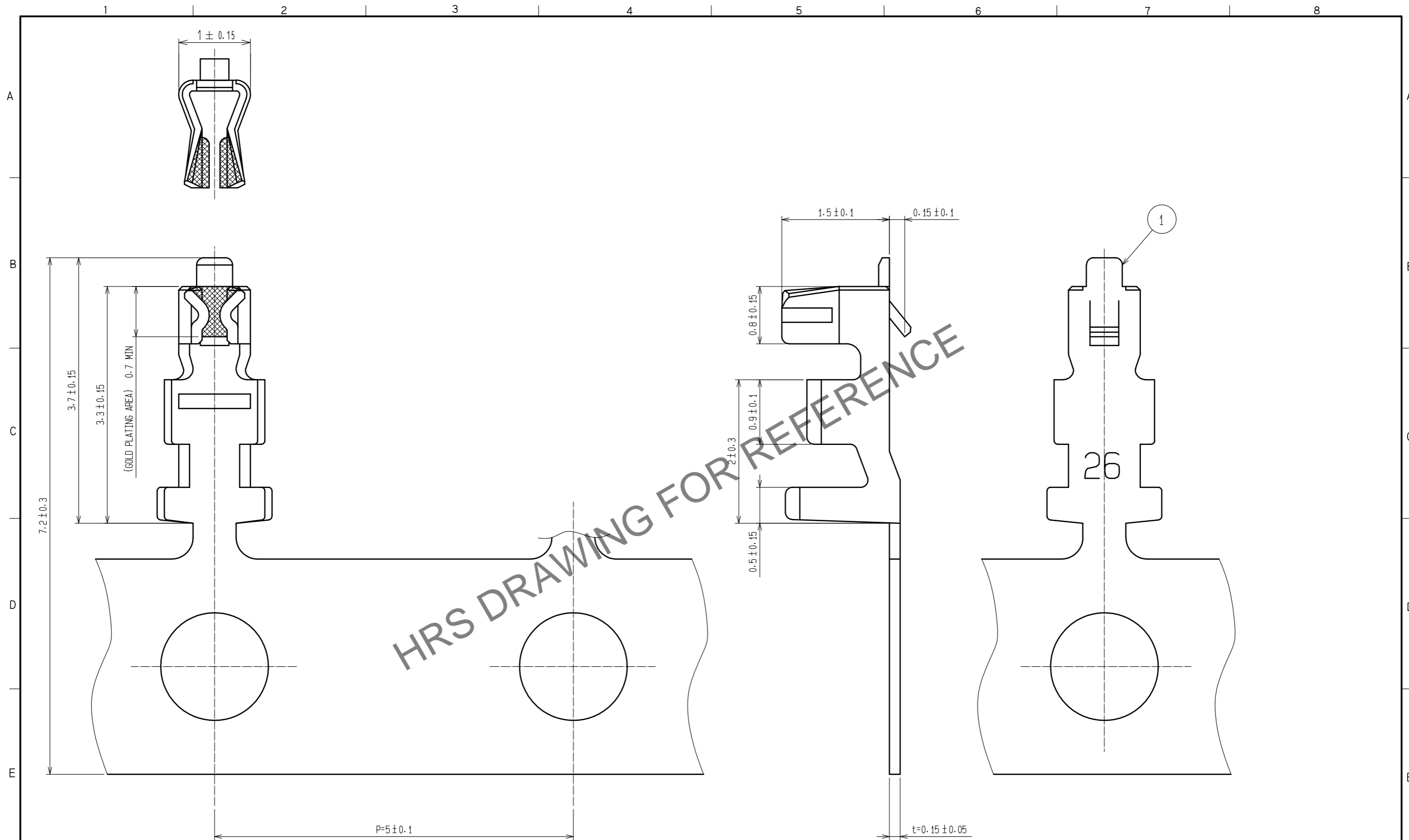


Mar.1.2024 Copyright 2024 HIROSE ELECTRIC CO., LTD. All Rights Reserved.  
In case of consideration for using Automotive equipment / device which demand high reliability, kindly contact our sales window correspondents.



HRS DRAWING FOR REFERENCE

NOTES 1: APPLICABLE WIRE : 26 - 30 AWG  
 2: 1 REEL 10000 CONTACTS  
 △ OUTER DIAMETER :  $\phi 0.56 - \phi 1.0$  mm

| NO. | MATERIAL        | FINISH . REMARKS   | NO. | MATERIAL | FINISH . REMARKS |
|-----|-----------------|--|-----|----------|------------------|
| 1   | PHOSPHOR BRONZE | CONTACT AREA: GOLD PLATING 0.2 $\mu$ m min<br>OTHERS: NICKEL PLATING 0.5 $\mu$ m min |     |          |                  |

| UNITS | SCALE | COUNT | DESCRIPTION OF REVISIONS | DESIGNED | CHECKED | DATE     |
|-------|-------|-------|--------------------------|----------|---------|----------|
| mm    | 20: 1 | 1     | DIS-H-00004809           | HT. SATO | SZ. ONO | 20190425 |

|                                      |                         |          |             |                  |
|--------------------------------------|-------------------------|----------|-------------|------------------|
| <b>HRS</b> HIROSE ELECTRIC CO., LTD. | APPROVED : KJ. KATAYOSE | 20050105 | DRAWING NO. | EDC-071220-00-00 |
|                                      | CHECKED : TY. OMA       | 20050105 | PART NO.    | DF13-2630SCFA    |
|                                      | DESIGNED : TS. KUMAZAWA | 20050105 | CODE NO.    | CL536-0298-5-00  |
|                                      | DRAWN : TS. KUMAZAWA    | 20050105 |             |                  |